



# CLEARPASS Ci

ADVANCED PARTIAL BODY SCREENING SYSTEM  
WITH ENHANCED DETECTION CAPABILITIES  
FOR FAST, SAFE AND PRECISE DETECTION  
OF ITEMS ON OR INSIDE THE BODY



## KEY FEATURES

Fastest scan acquisition time in the industry

Exceptional mobility

Small footprint (0.85m<sup>2</sup>)

Easy, hassle free plug & play installation

Automatic dose selection based on BMI

Advanced operator usage data reporting software

Easy scan area selection for operator user friendliness

Available with advanced contraband detection software

CLEARPASS Ci is the world's most advanced, mobile, single module body scanner, specially designed for the detection of contraband "on" or "in" the human body, by allowing selective area focused screening, which reduces screening and overexposure to other parts of the body.

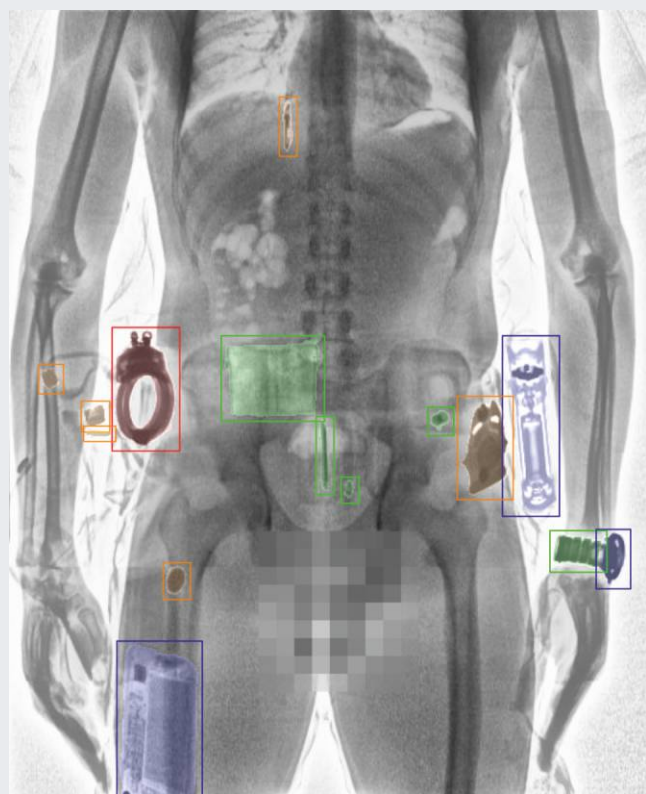
CLEARPASS Ci provides proven, world class, superior image quality and resolution. Leading the industry with the most effective solution for the detection of drugs, weapons, precious stones, metals, electronic devices and other threats such as liquid capsule contraband.

# CLEARPASS Ci

## OPTIONS

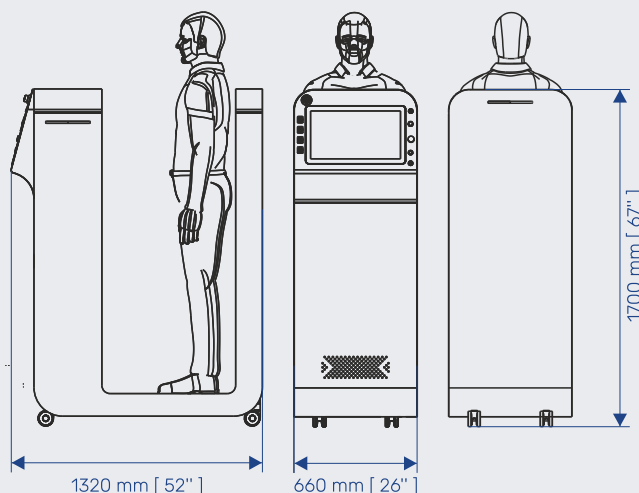
- ANSI/HPS N43.17-2009 Class B – partial body scanner
- Fastest scan acquisition time in the industry
- Exceptional mobility
- Small footprint (0.85m<sup>2</sup>)
- Easy, hassle free plug & play installation
- Automatic dose selection based on BMI
- Advanced operator usage data reporting software
- Easy scan area selection for operator user friendliness
- Available with advanced contraband detection software

## SMART THREAT DETECTION



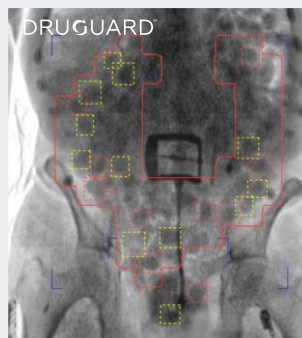
Automatic intellectual detection and indication of all threats on and inside the human body

- elements of clothes
- electronic devices (PCB inside)
- dangerous items (weapons, drugs)
- other items not belonging to the human body



## CLEARPASS DMS

- CLEARPASS DMS can unite X-ray scanners from distant locations into one network keeping track of the total X-ray exposure dose for each inspected person even when the person undergoes a security screening in different locations
- CLEARPASS DMS synchronizes the information: inspected people's accounts, scan records, and X-ray images between all connected devices
- CLEARPASS DMS is a set of applications used to run X-ray people screening systems. The system allows operators to inspect people and view their accounts, perform a security screening, and view the obtained X-ray images
- CLEARPASS DMS include at least three levels of controlled access including the following:
  - An "Operator" level for making scan, creating and filing reports and saving images as required.
  - A "Supervisor" level for supervisory staff to update subject information, create / update operators, review images and file data and monitor all operators' activity and data collected
  - An "Administrator" level to create/update/delete user group members with different levels of access, view audit logs, view images, save images to external drives and generate reports



Automatic drugs detection software algorithms for operator assistance & control



Smart HD images for Increased penetration and resolution